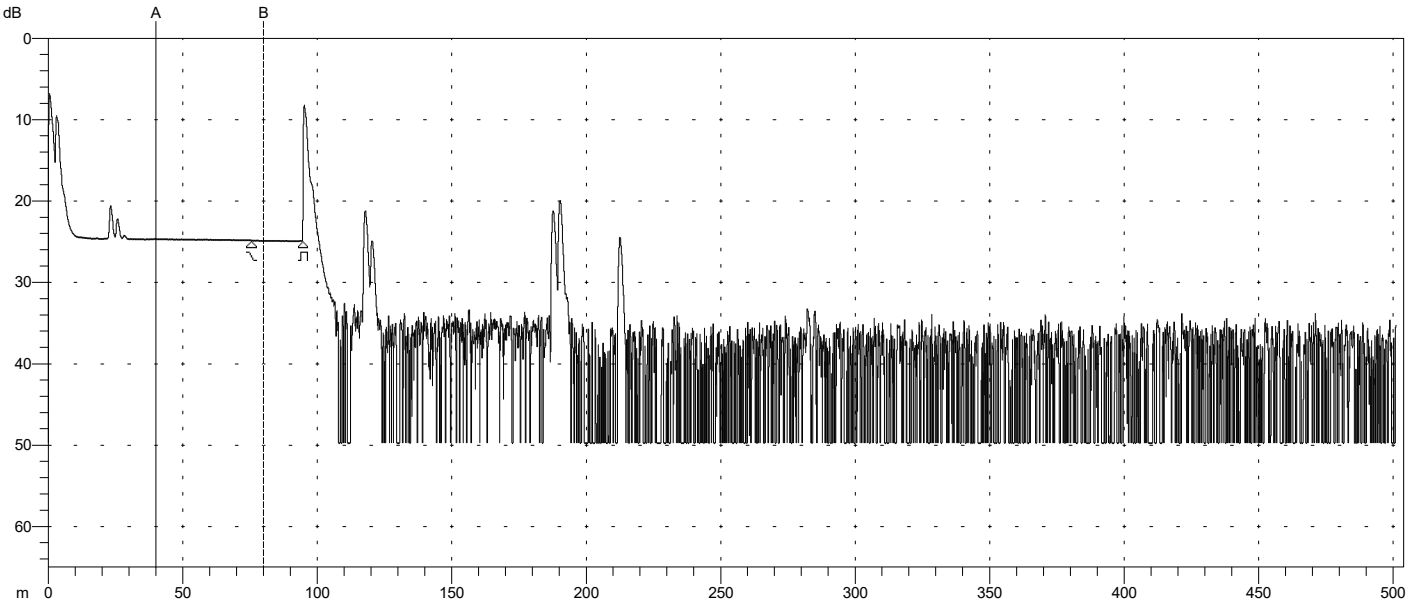


CPD-CSPI8 850.001.SOR

500 m/0.100 m



A: 40.00 m	Index: 1.496000	3ns / 0.3m [ HR ]
B: 80.00 m	Splice Loss: N/A	Avg: 11264 / 0:15
A -> B: 40.00 m	Reflectance: N/A	/850 nm/MM

Analysis Results -- CPD-CSPI8 850.001.SOR

Feature #/Type	Location (m)	Event-Event (dB) (dB/Km)	Loss (dB)	Refl (dB)
1/N	75.40	?? ??	0.06	
2/E	94.65	0.04 2.227	>3.00	>-28.83

Overall (End-to-End) Loss: ??

Primary Trace: CPD-CSPI8 850.001.SOR  
 Date: 27-Sep-18 Range: 500 m  
 Time: 09:36 AM Resolution: 0.100 m  
 Product Type: MT9083A-06 Pulse Width: 3 ns  
 Opt. Module: Index: 1.496000  
 Fiber Type: Multimode WaveLength: 850 nm  
 FAS Thresholds: Horz. Shift: 0.00 m  
 Loss: 0.05 dB Vert. Shift: 0.00 dB  
 Reflectance: -60.00 dB No. Averages: 11264  
 Fiber Break: 3.00 dB  
 Backscatter: -67.00 Trace Type: Anr SR4731  
 Trace Flags: Analysis  
 ORL: N/A

Page 1

```

| Language: PO
| Cable ID: CPD ATÉ CSPI8 V1A1
| Fiber ID: 1
| Wavelength: 850
| Org. Loc: ACADEPOL RIO DE JANEIRO
| Term. Loc: RTT TELECOM
| Cable Code: V1A1
| Condition: OT
| Operator: MARCELO VALENTIM
| Comment:
| Supplier: Anritsu
| OTDR Model: MT9083A-063
| S/N: 6200842351
| Optics Mod:
| S/N:
| S/W Rev.: 5.10
| Other:
    
```